

Coachella Health Element Presentation

Transportation Existing Conditions,
Challenges, and Options

Chris Gray, Senior Associate

Fehr & Peers

10/25/2011

Presentation Outline

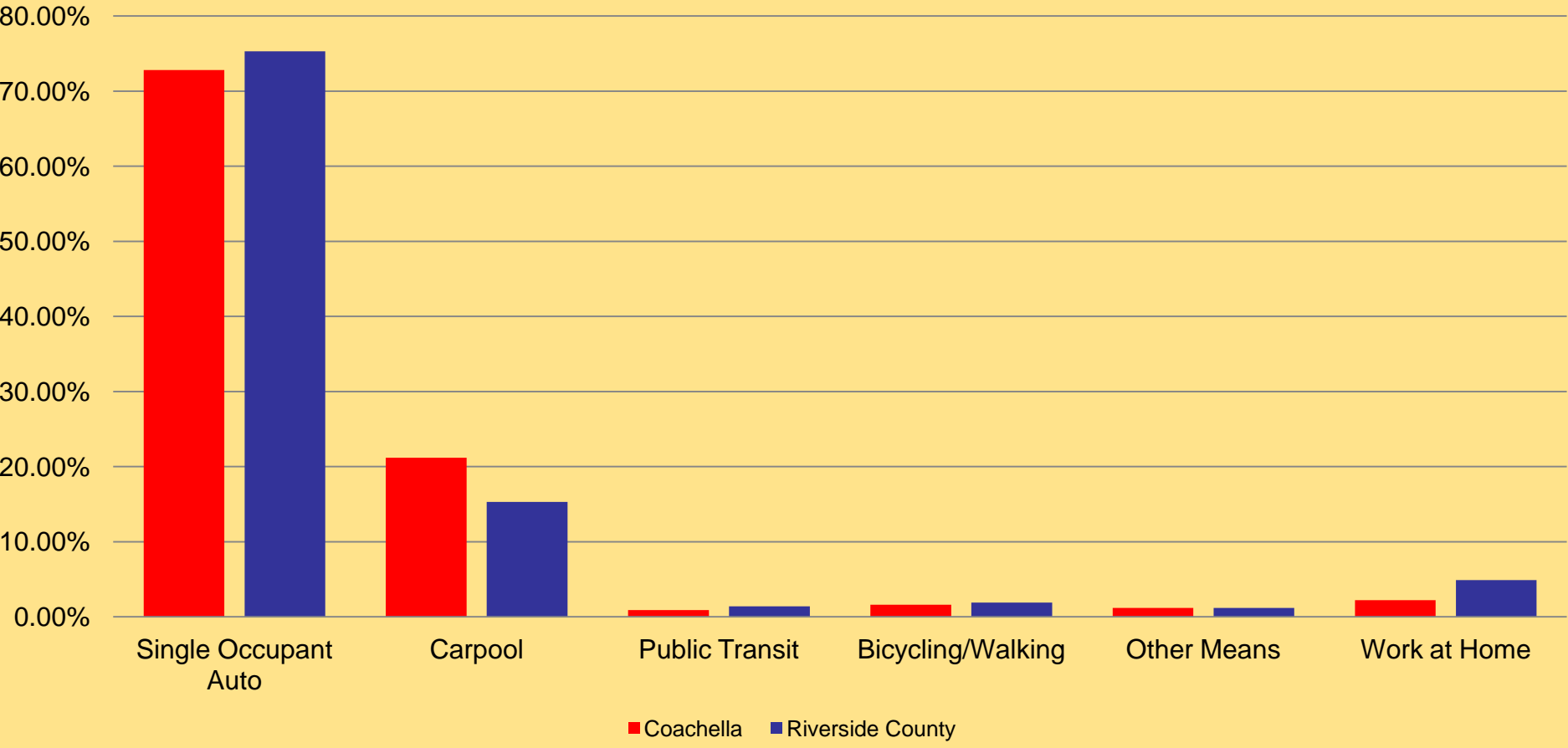
- Review of Existing Conditions
- Our Conclusions
- Discussion of Control vs. Effectiveness
- Discussion Topics

Review of Existing Conditions

Existing Conditions

- Travel Behavior
- Existing Traffic Volumes
- Vehicular Collisions
- Bicycle & Pedestrian Collisions
- Existing Transit Routes
- Existing Transit Usage
- Bicycle & Pedestrian Routes

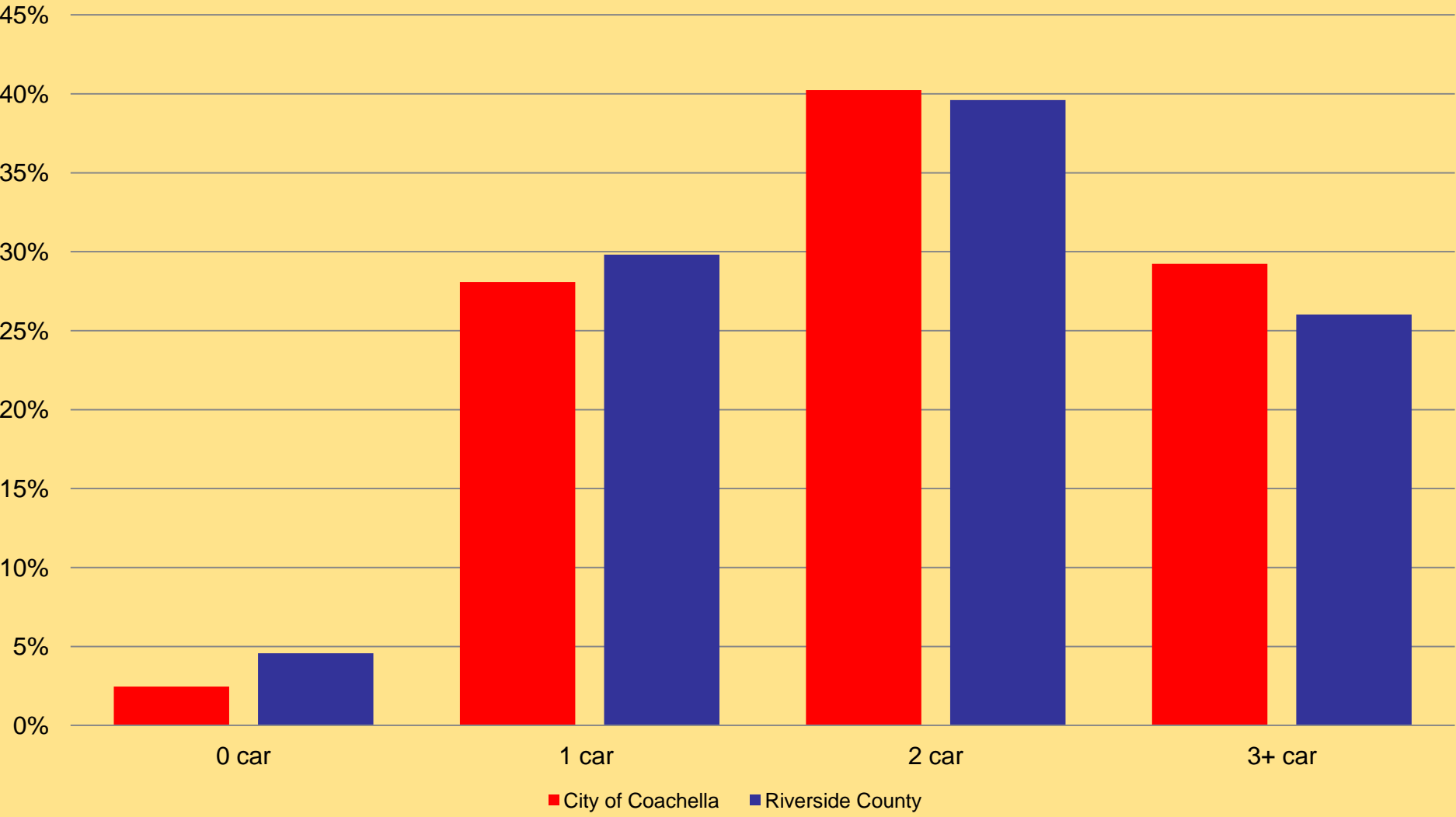
Journey to Work Data American Community Survey



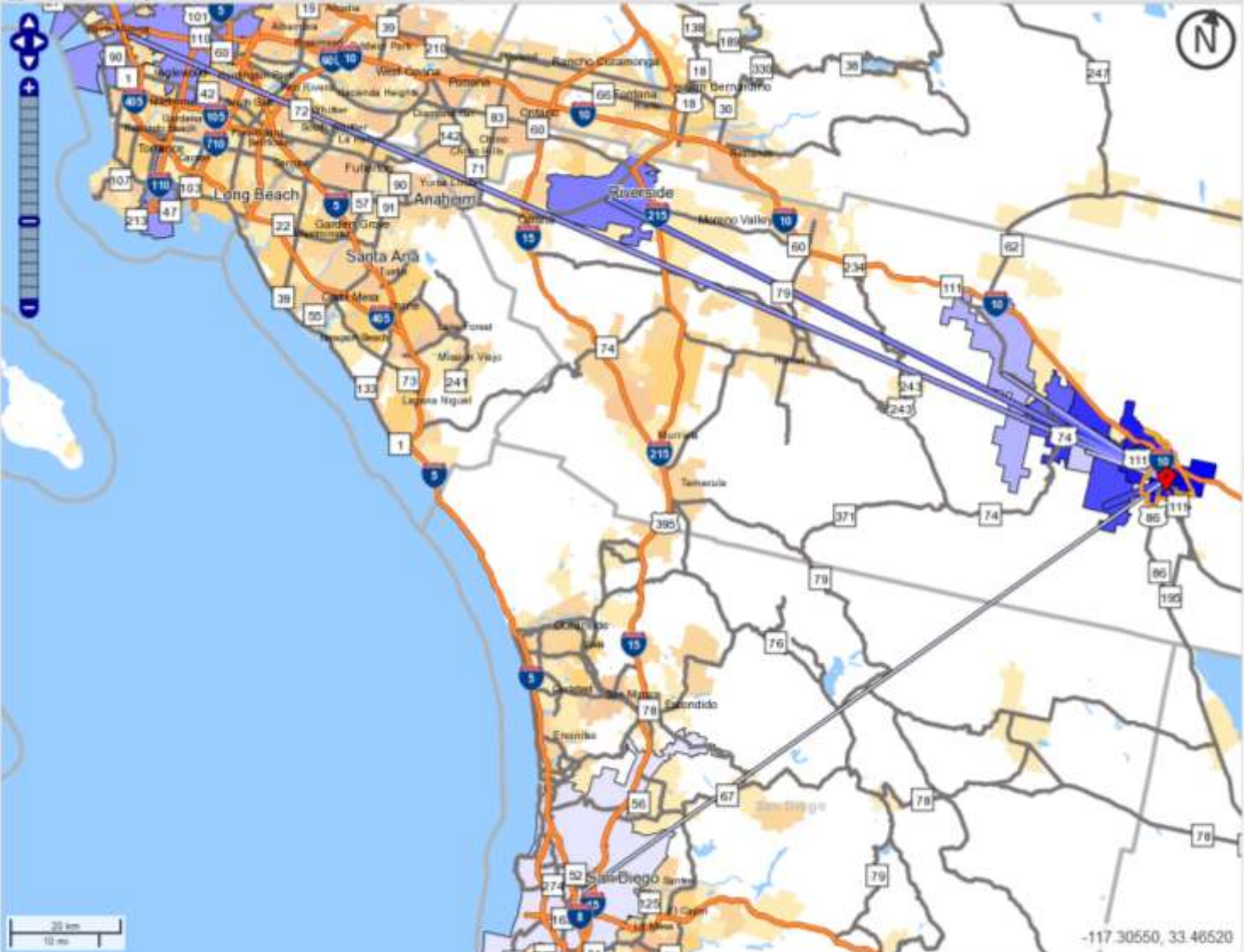
Notes on Travel Behavior Data

- Recorded by the Census
 - Unsure about how well all population groups are represented
- Only reflects travel to work
- Generally used because of availability
- Needs to be supplemented

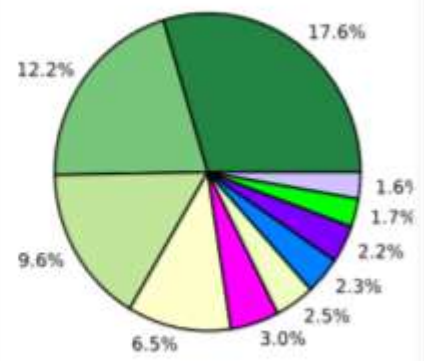
Auto Ownership Data by Households American Community Survey



Save Load Feedback Previous Extent Hide Tabs Hide Chart/Report



Job Counts by Work Places (Cities, CDPs, etc.) in 2009 All Workers



Note: Jobs in All Other Places (Cities, CDPs, etc.) (40.9%) are not shown in chart.

View as

Jobs Counts by Places (Cities, CDPs, etc.) Where Workers are Employed

	2009	
	Count	Share
Total All Jobs	10,152	100.0%
Coachella city, CA	1,783	17.6%
Indio city, CA	1,236	12.2%
Palm Desert city, CA	972	9.6%
La Quinta city, CA	658	6.5%
Rancho Mirage city, CA	309	3.0%
Riverside city, CA	252	2.5%
Los Angeles city, CA	231	2.3%
Palm Springs city, CA	228	2.2%
Indian Wells city, CA	174	1.7%
San Diego city, CA	161	1.6%
All Other Locations	4,148	40.9%

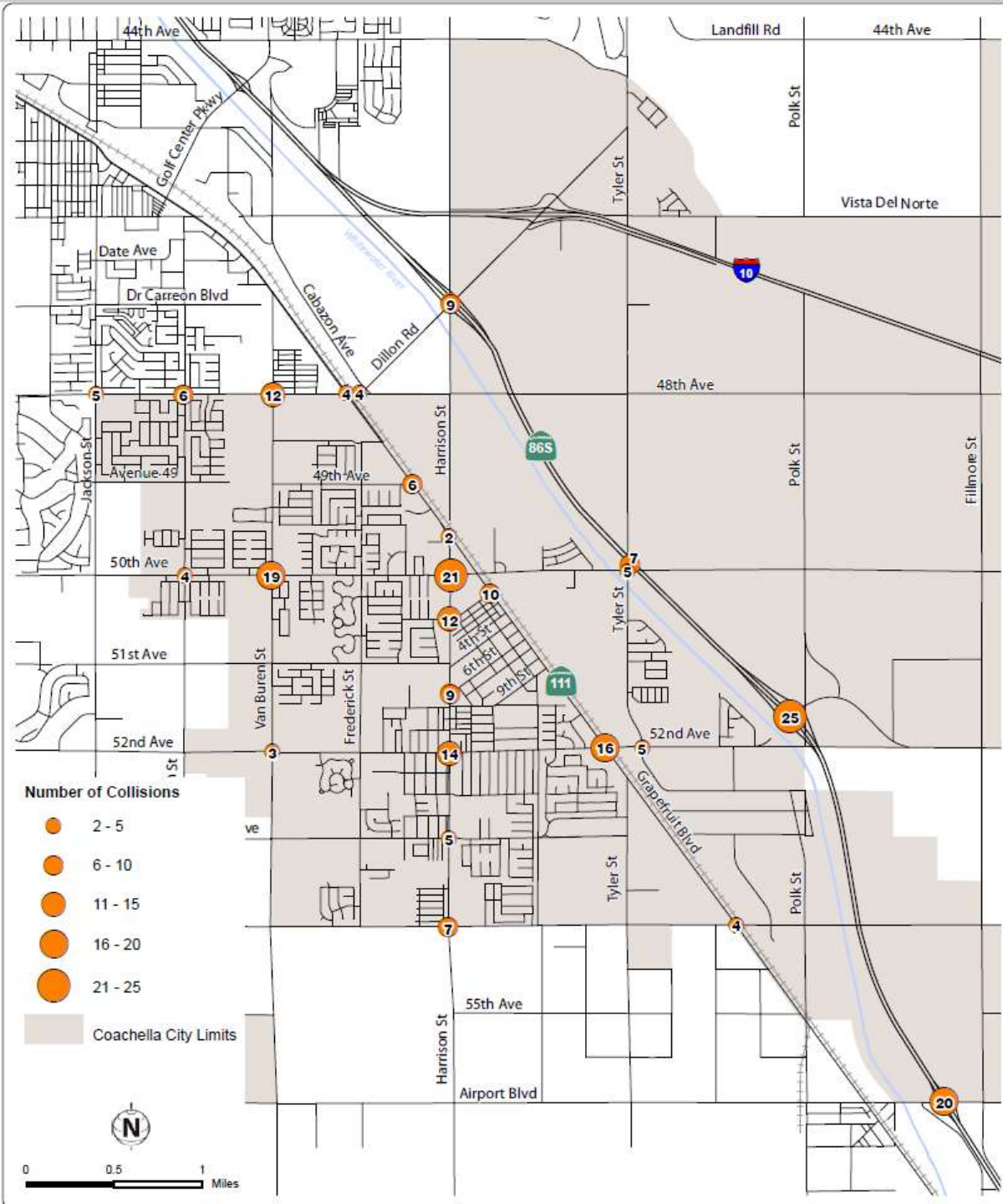
-117.30550, 33.46520

Existing Traffic Volumes

Roadway	Volume Range
SR 86 South	25,000 to 26,000
SR 111	11,000 to 33,000
Harrison Street	8,000 to 24,000
Van Buren	3,000 to 11,000
Avenue 48	10,000 to 12,000
Avenue 50	7,500 to 11,000
Avenue 52	8,000 to 14,000

Vehicular Collisions

2008-2011



Bicycle & Pedestrian Accidents

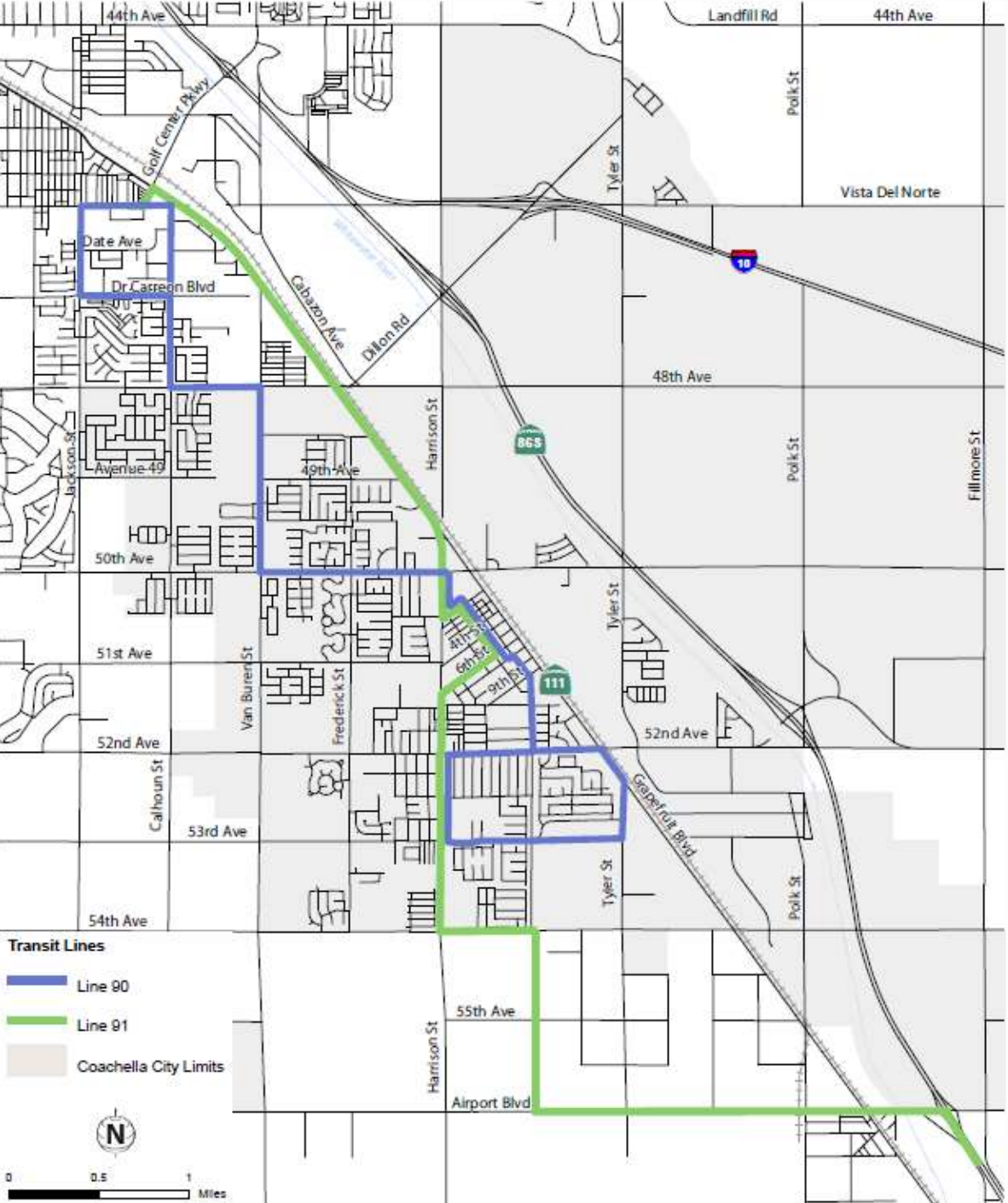
Category	Instances
Total Pedestrian Accidents	39
Pedestrian Injuries	15
Pedestrian Fatalities	4
Total Bicycle Accidents	11
Bicycle Injuries	8
Bicycle Fatalities	0

Overall Accident Statistics

- 812 total collisions
- 15 total fatalities
- 48 collisions involving DUI's
- Most common cause of accident was unsafe speed
- 5,400 total citations
 - 211 for improper child restraint
 - 620 for not wearing seat belt

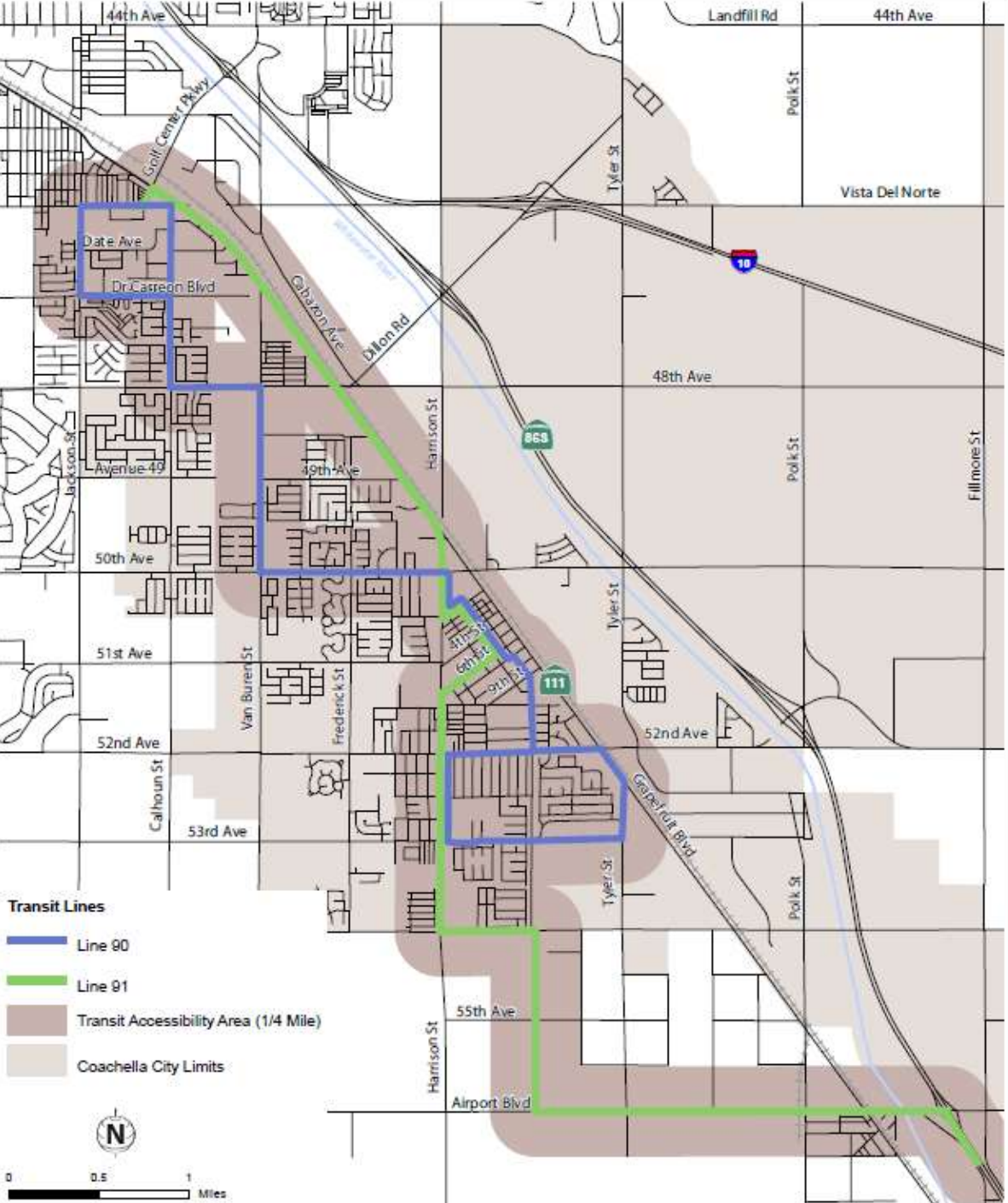
Transit Routes

2011



Transit Coverage

2011



Pedestrian Routes

2011



Existing Conditions Summary

Data Review

- Many people choose to drive for their daily travel
- Very high level of carpooling
- Few people taking transit to work
- Roadway volumes are relatively low
- Accidents occur mostly on higher volume, higher speed roadways

Data Review (cont)

- Citations for child restraint and seatbelts are a concern
- Reasonable transit coverage
- Significant gaps in sidewalks
- Only 1 bicycle facility

Control vs. Effectiveness



Control vs. Effectiveness

- Transportation behavior difficult to affect directly
- Numerous reasons why someone chooses to drive, car pool, use transit, etc.
- Function of income, location, auto ownership, licensing, home environment, work environment, availability of other options, etc.

Control vs. Effectiveness (cont)

- Other agencies involved
 - Transit service is dependent on transit agencies
 - Many agencies facing significant financial pressures in California
 - City depends on outside agencies for transportation funding (CVAG, etc)

What Does This Mean?

- City may have limited control over desirable policies
 - Encouraging transit depends on actions of transit agency to provide service
- Policies directly under City control may have limited short-term effectiveness
 - Land use strategies

Discussion Topics



Potential Discussion Topics

- Promoting transit use
- Encouraging pedestrian travel
- Promoting bicycling
- Vehicular accidents
- Seatbelt/infant restraint violations
- Focus on long-term or short-term strategies
- How best to reach out to other agencies for transportation